

mambominiLED™



Smaller, Lighter & Easier Modular Display
with improved KWIK-Connect™ Technology & Ultimate Rigging Experience

mambominiLED™

Smaller, Lighter & Easier Modular Display with improved KWIK-Connect™ Technology & Ultimate Rigging Experience

**CROSS-RENTABILITY
ADVANTAGE**
MIX & MATCH FLEXIBILITY

DSFG **mambominiLED™** allows you the flexibility to configure panels with various pixel pitch from 3mm indoor to 12mm** outdoor all in one screen! This means greater flexibility in rigging as well as a leaner inventory because you can use similar display structure, mechanism and share accessories.

**RIG & CLICK
INSTALLATION**
QUICK & EASY

DSFG **mambominiLED™**'s patented KWIK-Connect™ system includes a king pin and a newly updated Allen key click prelock mechanism to make secure panel connection faster than MamboLED™. This field-proven system also comes with an adjustable hanging bracket that makes panel height adjustment a breeze as compared to the conventional way of rigging screens.

**SLIMLINE
& LIGHTWEIGHT**
TOUGH & STRONG

DSFG **mambominiLED™**'s cabinets weigh between 12 kg (indoor) to 14 kg (outdoor) which is 20-22% lighter than the existing MamboLED™. These light and strong cabinets are made of heavy duty aluminum and laser cut to precision. Coupled with robust circuitry and component assembly, they are built for frequent handling and ready to perform in harsh environments.

**Pro-SMT II
TECHNOLOGY**
HI-TECH COATING

DSFG **mambominiLED™** outdoor series come with Pro-SMT II, a technology utilizing a highly durable coating to protect surface mounted LEDs from moisture and UV harm. This high-tech coating not only makes a smoother and flatter surface protection possible, it also effectively reduces glare and enhances the LED's contrast.

**PIX-LEVEL
CALIBRATION**
BRIGHT & COLORFUL

Corrects and configures the display to achieve the best possible visual appearance in terms of luminance (brightness) and colour uniformity, ensuring its performance level is maximized throughout the display life.

**>2 kHz
HI-REFRESH RATE**
STATIC & FLICKER-FREE

With high refresh rates of more than 2,000 Hz, **DSFG mambominiLED™** is a broadcast-ready display providing static and flicker-free video images for video recording and live video feeds.

**HT+70™
HI-TEMPERATURE**
OPERABILITY & EFFICIENCY

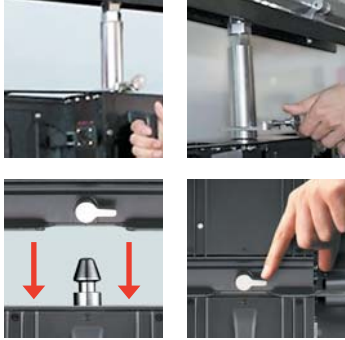
Supported by an energy efficient system that is rated to withstand high operating temperatures up to +70°C and consumes less power. A 'green' feature that reduces impact on the environment whilst saving you money.



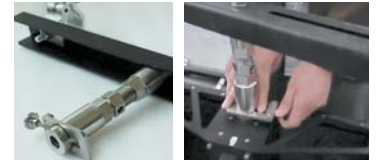
Designed and built with the rental industry in mind. Your Mambo advantages...



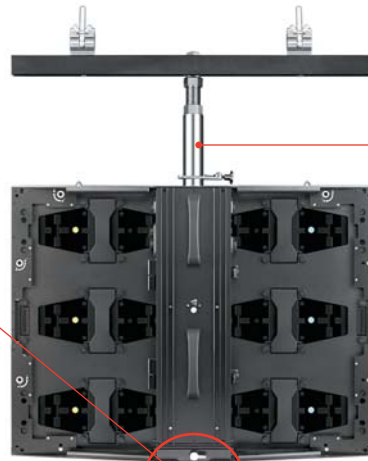
rigging options



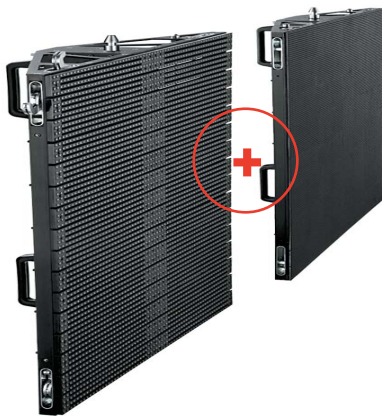
"Rig and Click" Vertical Interconnect
Our unique King Pin locking system allows fast and effortless vertical panel connection in a simple 3-step process: align, lift and click & lock



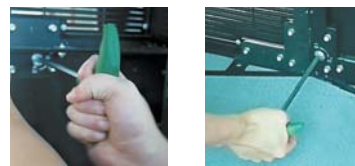
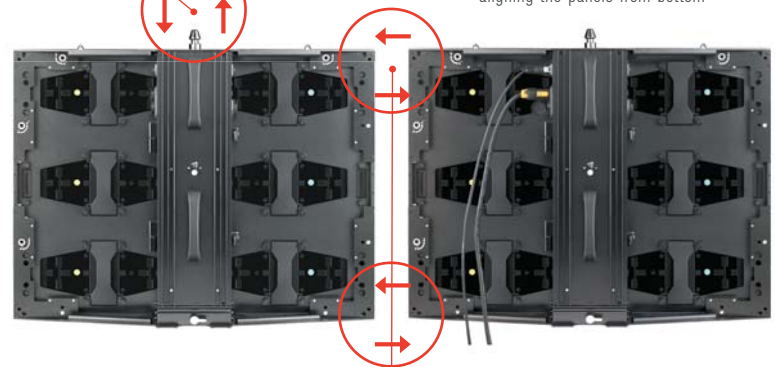
Easy Top Mounting
An adjustable hanging bracket with clamps facilitates secure and easy mounting to truss or structure



Hassle-Free Alignment
Adjustment of panels from top down is much easier and more accurate than aligning the panels from bottom



Mix And Match Flexibility
Configure panels with various pixel pitch from 3mm indoor up to 12mm** outdoor all in one screen



Quick Horizontal Interconnect
Align the panels and slightly push them into place until they snap before tightening them with an Allen key



mambominiLED™

High Refresh Rates
More than 2,000 Hz to provide static and flicker free display for TV camera recording

Black LED
Enhanced Contrast and Visual Performance

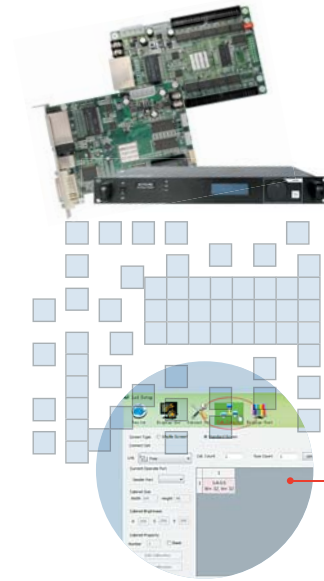
Pix-Level Calibration
Calibratable brightness and colour uniformity

Stable Signal Transmission
44 pins connector and bridge board are used instead of ribbon cable enabling more reliable and steadier signal transmission

Aluminum Cabinet
2.5mm thick metal Slim profile and lightweight

3 : 2 Aspect Ratio
Ideal for video content captured on DSLR

Pro-SMT II
Hi-tech coating to serve as a smoother and flatter LED protection as well as glare reduction and contrast enhancement



Advanced Image Processing Platform
DSFG's powerful image control system includes a digitizer, receiver card and user-friendly Fore-G System Management Software for fast, trouble free set-up and configuration

- Allowing total control of your display content at a simple mouse click
- Acceptance of a multitude of data and video sources
- Compatibility with all resolutions and aspect ratios
- Scaling/compressing capability

Fore-G System Management Software
Forward compatible Windows based set-up software provides easy to navigate environment and is packed with diagnostic features like Failure Notification, Thermostatic Monitoring, Data Transmission Verification, etc

- Seamless connection between panels
- Hot swappable panels
- Wide and optimized viewing angle
- Fanless design enables silent and maintenance-free operation

"Rig & Click" Prelock Mechanism and King Pin
Easy and quick assembling

Test Button
Allows RGBW preview testing without connecting to any PC or external data source

Control Unit
Cleaner design with fewer cables reduces failure rate and increases reliability as well as allowing it to be opened while the tile is operating

Rear Accessibility
Single module replacement made easy thus improves serviceability

Lockable Door with Hinges
Control unit housing with hinged door enables easy access

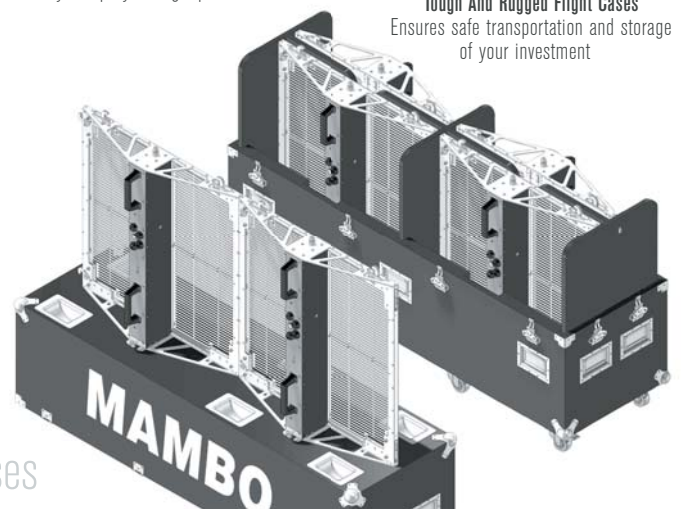
Captive Panel Screw
Screws are snapped into position by thumb pressure thus easy module replacement without complete removal of screws

Knob Latch
Easy turn and lock action allows faster vertical panel connection

Ergonomically Placed Handle
Easy setup by a single person


Tough And Rugged Flight Cases
Ensures safe transportation and storage of your investment

billboards
arenas
auditoriums
shopping malls
stadiums
squares &
concourses



mambominiLED™



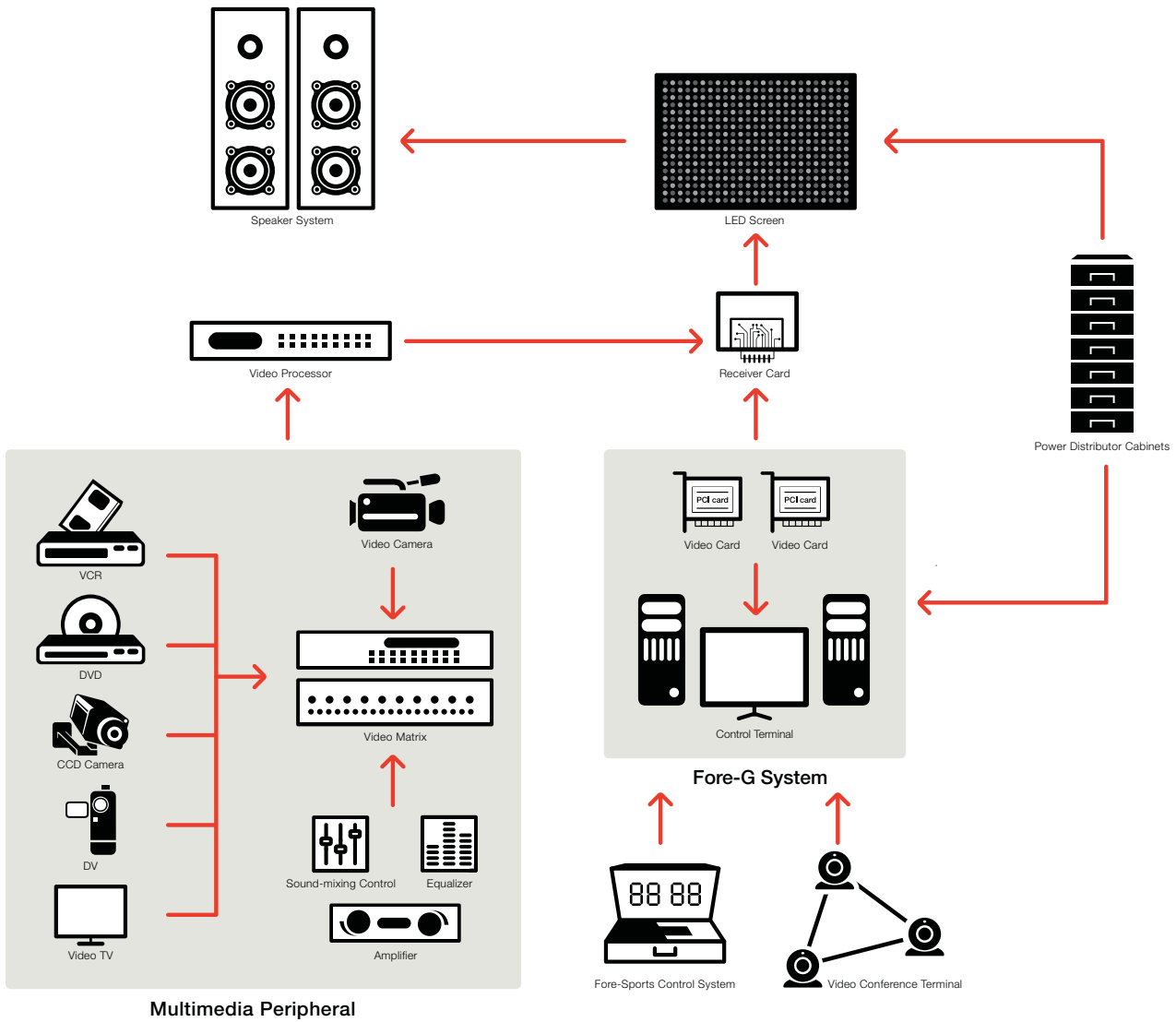
Material Parameters	Mini Mambo-3	Mini Mambo-4	Mini Mambo-6	Mini Mambo-6	Mini Mambo-8	Mini Mambo-9	Mini Mambo-12
Pixel Pitch	3.4 mm	4.8 mm	6.0 mm	6.8 mm	8.0 mm	9.6 mm	12.0 mm
Pixel Matrix Per Tile (W x H)	112 x 56	80 x 40	64 x 32	56 x 28	48 x 24	40 x 20	32 x 16
Pixel Per Tile	6,272	3,200	2,048	1,568	1,152	800	512
Pixel Density	85,069/m ²	43,402/m ²	27,777/m ²	21,267/m ²	15,625/m ²	10,851/m ²	6,944/m ²
Module Size (mm)	384 x 192	384 x 192	384 x 192	384 x 192	384 x 192	384 x 192	384 x 192
Recommended Minimum Viewing Distance	>3.4 m	>4.8 m	>6 m	>6.8 m	>8 m	>9.6 m	>12 m
Brightness	≥1,200cd/m ²	≥1,200cd/m ²	≥1,500cd/m ²	≥5,000cd/m ²	≥5,000cd/m ²		≥6,000cd/m ²
Colour Temperature	5,000°-10,000°k	5,000°-10,000°k	5,000°-10,000°k	5,000°-10,000°k	5,000°-10,000°k	5,000°-10,000°k	5,000°-10,000°k
Contrast Ratio	3,000:1	3,000:1	3,000:1	2,200:1	2,200:1		2,200:1
Viewing Angle-Horizontal & Vertical (50% Brightness)	140°(+70°/-70°)	140°(+70°/-70°)	140°(+70°/-70°)	140°(+70°/-70°)	140°(+70°/-70°)		140°(+70°/-70°)
Panel Weight	13kg	13kg	13kg	14kg	14kg		14kg
Panel Dimensions (Width x Height x Depth)	(768x576x114) mm	(768x576x114) mm	(768x576x114) mm	(768x576x114) mm	(768x576x114) mm		(768x576x114) mm
Panel Area	0.442sq.m.	0.442sq.m.	0.442sq.m.	0.442sq.m.	0.442sq.m.		0.442sq.m.
Panel Material	Aluminium	Aluminium	Aluminium	Aluminium	Aluminium		Aluminium
Ingress Protection (Front/Rear)	IP40/ IP43	IP40/ IP43	IP40/ IP43	IP65/ IP65	IP65/ IP65		IP65/ IP65
Operating Temperature Range	-20°C to +70°C	-20°C to +70°C	-20°C to +70°C	-20°C to +70°C	-20°C to +70°C		-20°C to +70°C
Operating Humidity Range	20% to 90% RH	20% to 90% RH	20% to 90% RH	20% to 90% RH	20% to 90% RH		20% to 90% RH
Pixel Type and Configuration (R/G/B)	SMD 3-IN-1 1515	SMD 3-IN-1 2020	SMD 3-IN-1 3528	SMD 3-IN-1 3535	SMD 3-IN-1 3535		SMD 3-IN-1 3535
Colours	281 trillion	281 trillion	281 trillion	281 trillion	281 trillion		281 trillion
Grey Scale (Linear)	16 Bits x RGB	16 Bits x RGB	16 Bits x RGB	16 Bits x RGB	16 Bits x RGB		16 Bits x RGB
Brightness Control	100 Levels	100 Levels	100 Levels	100 Levels	100 Levels		100 Levels
Processing Depth	16 Bits (65,536 Levels)	16 Bits (65,536 Levels)	16 Bits (65,536 Levels)	16 Bits (65,536 Levels)	16 Bits (65,536 Levels)		16 Bits (65,536 Levels)
Video Frame Rate	50 Hertz - 85 Hertz	50 Hertz - 85 Hertz	50 Hertz - 85 Hertz	50 Hertz - 85 Hertz	50 Hertz - 85 Hertz		50 Hertz - 85 Hertz
Display Refresh Rate	≥2,000 Hertz	≥2,000 Hertz	≥2,000 Hertz	≥2,000 Hertz	≥3,000 Hertz		≥4,000 Hertz
Drive Mode	1:14 multiplex	1:8 multiplex	1:8 multiplex	1:8 multiplex	1:4 multiplex		Static Drive
Input Voltage (Nominal)	110VAC/220VAC±10%	110VAC/220VAC±10%	110VAC/220VAC±10%	110VAC/220VAC±10%	110VAC/220VAC±10%		110VAC/220VAC±10%
Input Power Frequency	47 Hertz / 63 Hertz	47 Hertz / 63 Hertz	47 Hertz / 63 Hertz	47 Hertz / 63 Hertz	47 Hertz / 63 Hertz		47 Hertz / 63 Hertz
Input Power (Max)	≤400watts/panel	≤400watts/panel	≤400watts/panel	≤400watts/panel	≤400watts/panel		≤400watts/panel
Input Power (Ave.)	≤150watts/panel	≤120watts/panel	≤120watts/panel	≤170watts/panel	≤170watts/panel		≤170watts/panel
Lifetime (50% Brightness)	≥100,000 Hours	≥100,000 Hours	≥100,000 Hours	≥100,000 Hours	≥100,000 Hours		≥100,000 Hours
Application	Indoor			Outdoor			
Compliance							

■ Indoor ■ Outdoor

Features and specifications are subject to change without prior notice.

* Please specify when placing order. ** 16 mm pixel pitch available upon request. Terms and conditions apply.

Network Multimedia System Connections



Multimedia Peripheral

ACCESSORIES



Main Data Cable
• Length: 15 m



Data Interconnect Cable
• Length: 1.0 m



Main Power Cable
• Length: 15 m
• Support up to 9 cabinets



Power Interconnect Cable
• Length: 1.0 m



LED External Sending Box



Adjustable Hanging Bracket*
• 2mm heavy-duty gauge aluminum bar
• Support up to 18 cabinets
• 7mm slot for adjusting the shackle and hex nut



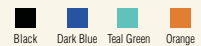
T-shaped Hex Wrench



Adjustable Floor Mounting*
• Lightweight, strong and sturdy floor stand
• 768mm (W) X 3,222mm (H)
• Holds up to 4 cabinets vertically



Flight Case
• Capacity: 0.8 m³
(Holds up to 6 cabinets)
• Weight: 160 KG
(Flight case + 6 cabinets)
• Available in 4 colour choices



* Non-standard accessories are available as separately orderable items to complement our LED display solutions



Complies with the essential standard/requirements of:



DS FOREGROUND

DS Foreground Displays Limited

Block C, 4th Floor, Fenda Hi-Tech Zone, Sanwei Xixiang, Baoan, Shenzhen, China. 518126

Tel: +86 755 8527 3103 • E-Mail: sales@dsforeground.com

www.dsforeground.com

All the information and visuals contained herein are subject to DS FOREGROUND Displays Limited's copyright privileges and regulations. No material from this Brochure can be used in any form, in part, or as a whole, or for any use (including copying, modifying or transmitting). Prior to any usage of its Contents, requires the exclusive written permission of DS FOREGROUND Displays Limited. All images used in this Brochure are for illustrative purposes only. Features and specifications presented herein are subject to change without prior notice.